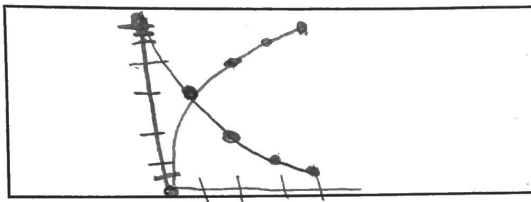


9. Give the two parts of the law of radioactivity developed by Soddy and Rutherford. & Draw the curve they derived.

1. every element has its own unique rate of decay.
2. The element keeps that rate of decay forever.



-- Parent
-- daughter

10. Explain the Carbon 14 decay process and how it leads to the Radio Carbon Dating Method. Use and label a diagram to help explain.

Cosmic waves hit N^{-14} turning it into C^{-14} . We breath C^{-14} and after we die the carbon decay rate starts. (C^{-14} turning into N^{-14})

